

Breaking the inequality–pandemic cycle

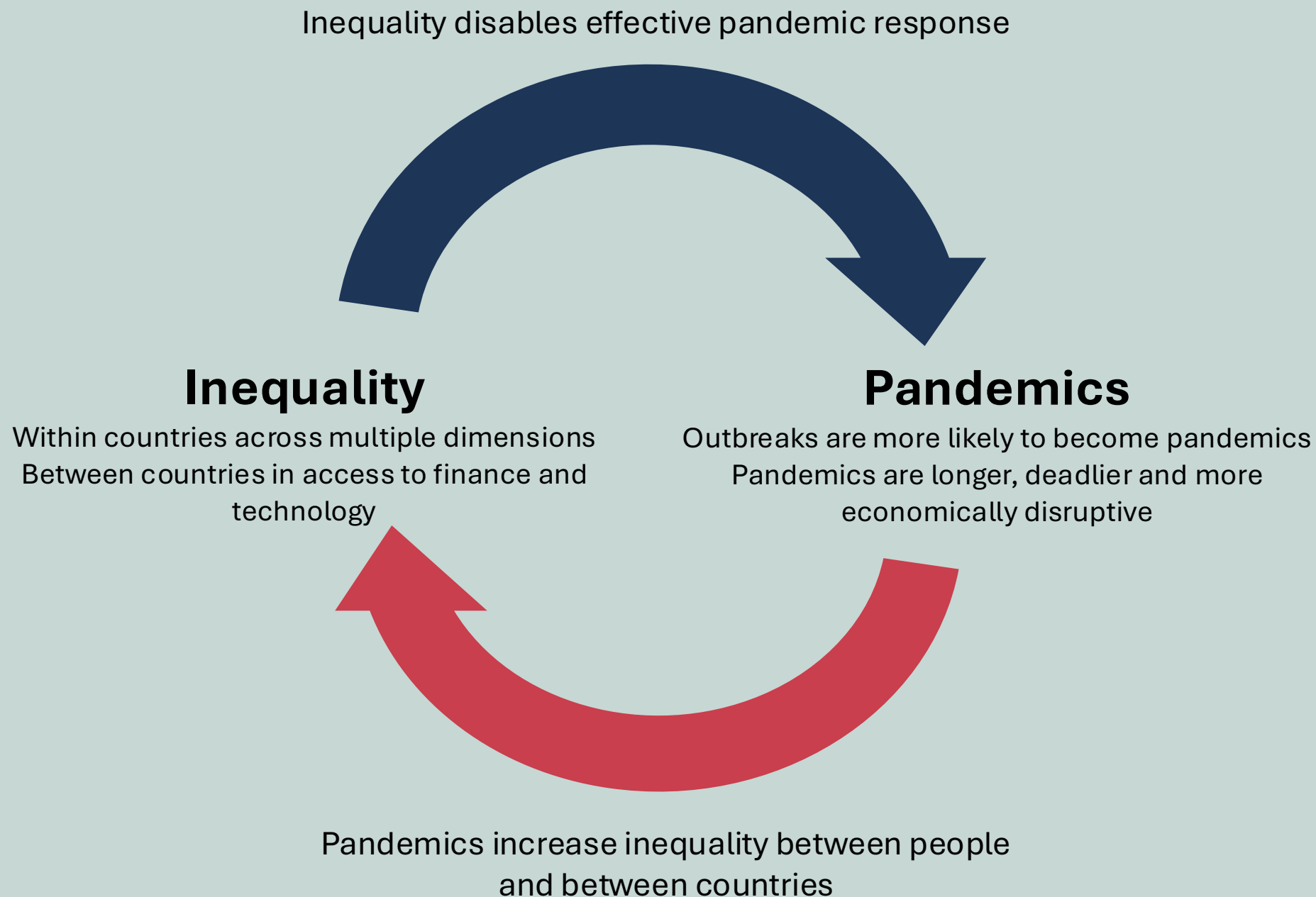
Building true health security in a global age



GLOBAL COUNCIL ON
INEQUALITY
AIDS AND PANDEMICS



The inequality– pandemic cycle

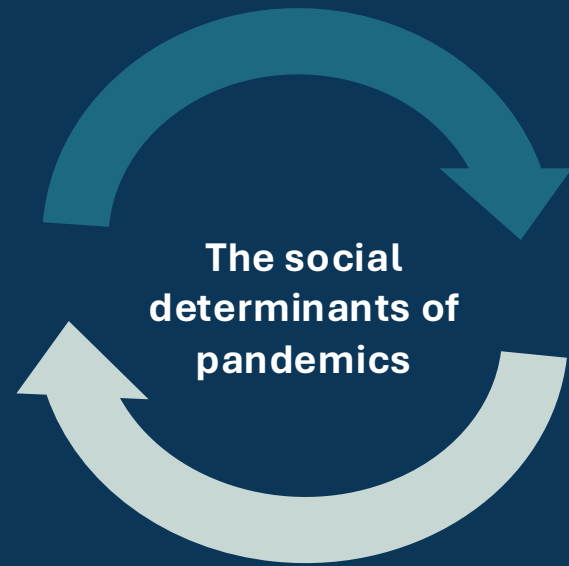


Inequality drivers of the cycle





Inequalities **WITHIN** countries



Addressing the social determinants of pandemics



Multisectoral and community-led responses to increase efficacy, trust and inequality-responsiveness

Health services alone often cannot reach the most vulnerable or address the social determinants of pandemics

Low trust in institutions by those most affected

Insufficient action by sectors outside health to address the inequalities fueling the pandemic

Strong efforts to prevent and fight pandemics are disabled by contexts of high and rising inequality

Recommendation to break the inequality-pandemic cycle

Build greater trust, equality, and efficiency in pandemic response by investing in multi-sectoral response and community-led pandemic infrastructure in partnership with government

- **During a pandemic, including AIDS today:** Shift funding and measurement of pandemic impacts and preparedness and responses to include community-based and led organizations to reach those unreached by public and private health services. This should accompany, not replace, universal public services.
- **To make the world safer from future pandemics:** Establish multisectoral governance structures for pandemic response that include multiple ministries as well as community organizations, rights groups and scientific leadership





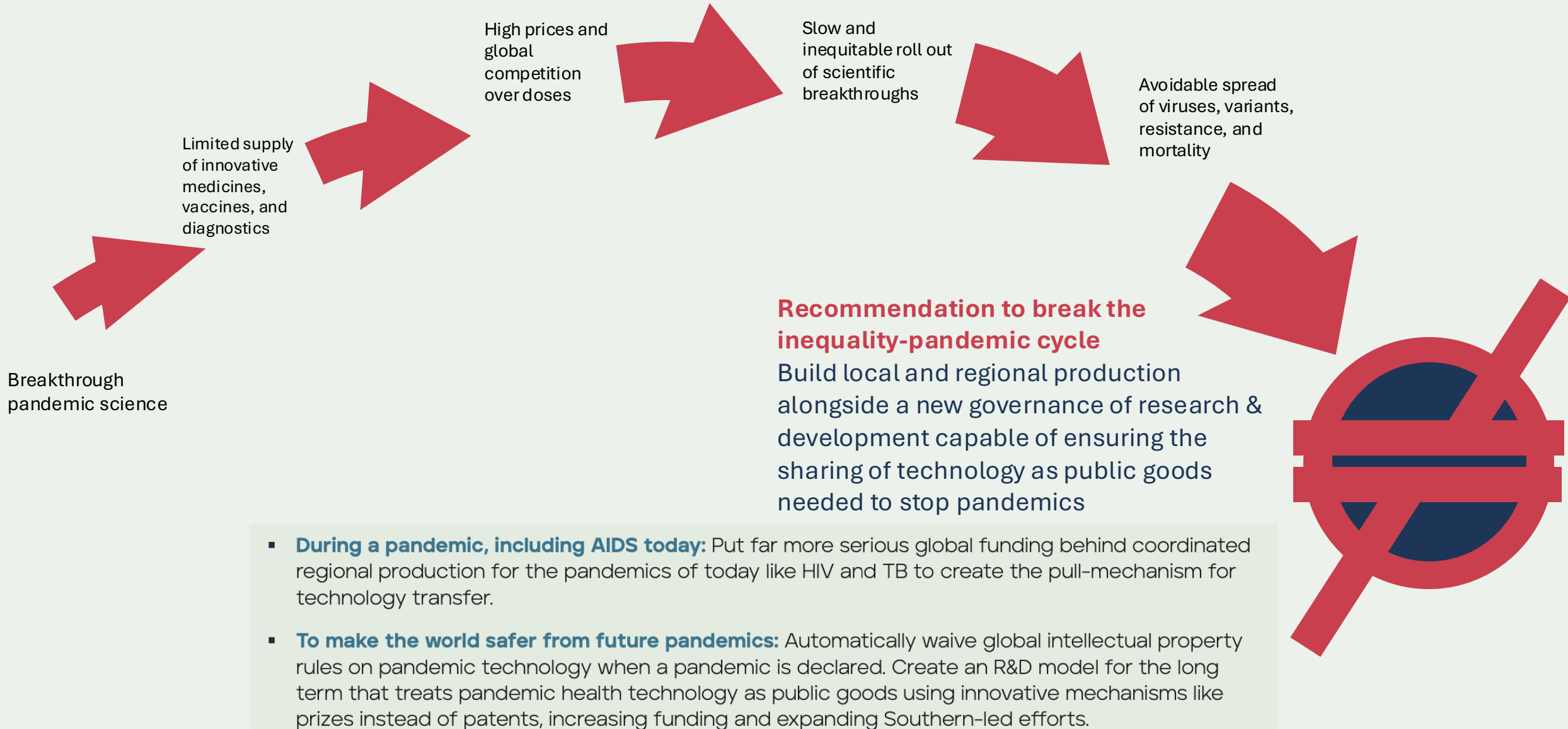
BETWEEN country inequalities and the impact of pandemics



Interrupting international economic inequalities



Speeding access to pandemic science and technologies





Inequality harms health: pandemics and their social determinants

THE CONVERSATION

Rigor acadêmico, estilo jornalístico

Análises, pesquisas, acadêmicos...



Desigualdade faz mal à saúde: as pandemias e seus determinantes sociais

Publicado: 12 dezembro 2025 11:54 -03

Jovens esperam em fila de doação de ceias de Natal nas ruas de Bucareste, na Romênia, durante a pandemia de Covid-19, no dia 24 de dezembro de 2020. AP Photo/Vadim Ghirda



Pandemias aprofundam desigualdades. Desigualdades tornam sociedades mais expostas a pandemias. Essa é a conclusão central do relatório lançado em novembro pelo [Conselho Global sobre Desigualdades, Aids e Pandemias](#), ligado ao [Unaid/ONU](#).

No próximo dia 16 de dezembro, a versão em português desse relatório será lançada em um evento do Unaid, em Brasília.

Autor



Nisia Trindade Lima
Ministra da Saúde, de janeiro de 2023 a fevereiro de 2025; presidente da Fiocruz, de 2017 a 2022, e pesquisadora titular da Casa de Oswaldo Cruz, Fundação Oswaldo Cruz (Fiocruz)

Declaração de transparência

Article published on December 12, 2025

